
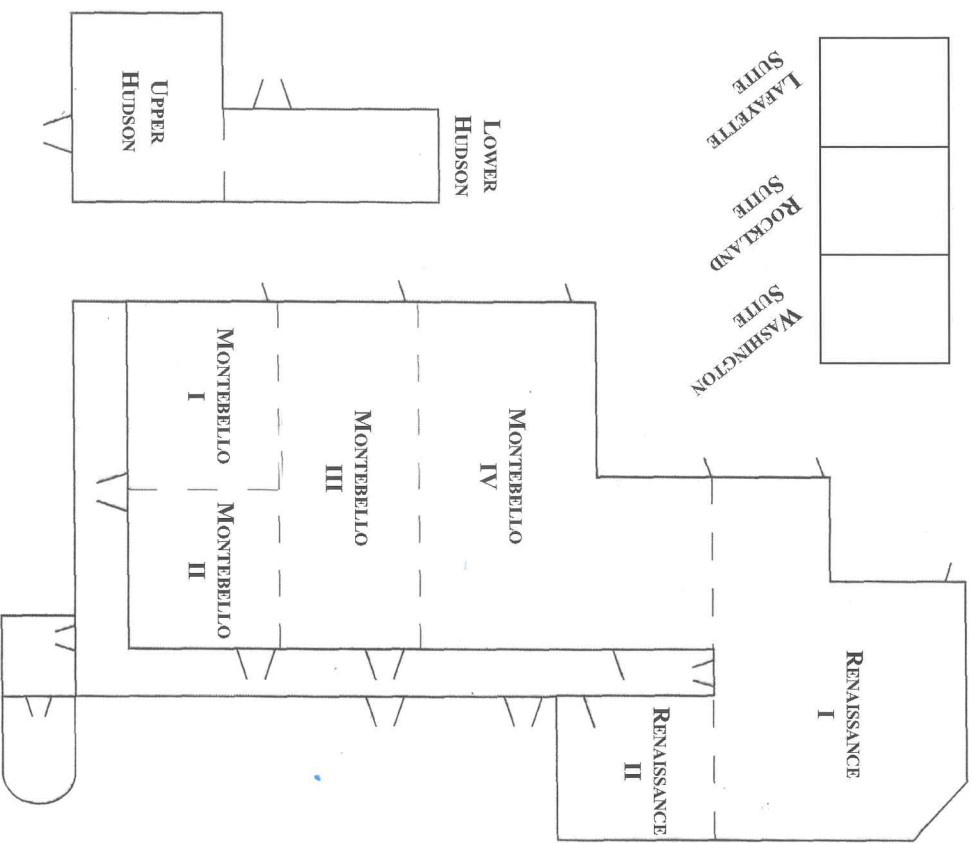


3 EXECUTIVE BLVD.  
SUFFERN, NY 10901  
Intrstate I-87 • Exit 14B

  
**CROWNE  
PLAZA®**  
SUFFERN

(845) 357-4800  
CPSUFFERNHOTEL.COM  
Find us on Facebook 



MEETING ROOM	ROOM SIZE	SQ. FT.	THEATRE	CLASSROOM	U/SHAPE	ROUNDS	DINNER/DANCE	CEILING	CONFERENCE
Montebello I	32x31	992	75	40	30	60	N/A	12'6"	30
Montebello II	32x31	992	75	40	30	60	N/A	12'6"	30
Montebello I, II	32x61	1952	175	100	50	150	100	12'6"	50
Montebello I, II, III	64x61	3904	300	180	90	325	200	12'6"	N/A
Montebello III	32x61	1952	175	100	50	150	100	12'6"	50
Montebello IV	32x61 + alcove	2503	175	100	50	200	120	12'6"	50
Montebello Ballroom	96x31 + alcove	6407	650	300	150	550	420	12'6"	N/A
Renaissance I	n/a	2784	200	125	50	180	140	12'6"	50
Renaissance II	20x27	540	50	25	20	40	20	12'6"	20
Renaissance Ballroom	N/A	3234	250	150	70	200	160	12'6"	N/A
Montebello and Renaissance Ballroom	Irregular	9641	N/A	N/A	N/A	750	700	12'6"	N/A
Ballroom Foyer	125X112	1500	N/A	N/A	N/A	N/A	N/A	12'	N/A
Lower Hudson	45x35	1575	100	60	40	100	60	11'7"	30
Upper Hudson	48x38	1824	120	70	50	120	100	11'6"	40
Hudson Ballroom	93x37	3441	220	130	N/A	220	150	varies	N/A
Rockland Suite	24x20	480						8'	16
Lafayette Suite	24x20	480						8'	16
Washington Suite	24x20	480						8'	20
Waterfall Gardens	130x50	6500				280	N/A	open	N/A

Executive Board with Ergonomic Chairs, Flat Screen TV  
and Smart Table for up to 18 People